



WINDOW AND TERRACE SYSTEMS

ALUMINIUM
WOODEN
WOODEN-ALUMINIUM

MADE WITH PASSION
AND EXPERIENCE



TABLE OF CONTENTS



ALUMINIUM WINDOWS

4

MB-86SI	6
MB-70 / MB-70HI	8
MB-45	10

TERRACE SYSTEMS

MB-86 FOLD LINE	12
MB-77HS / MB-77HS HI	14
MB-70 PSK / MB-70HI PSK	16



WOODEN-ALUMINIUM WINDOWS

28

DUOLINE	30
TERRACE SYSTEMS	
DUOLINE HS	32
DUOLINE PSK	34



WOODEN WINDOWS

18

SOFTLINE	20
TERRACE SYSTEMS	
SOFTLINE 68	22
SOFTLINE HS	24
SOFTLINE PSK	26



FACADES / WINTER GARDENS

36

MB-SR50N / SR50N HI	38
MB-WG60	40



EXTRAS

MUNTIN BARS	44	VENTILATION	56
BALCONY THRESHOLDS	46	ALUMINIUM COLOURS	58
HANDLES	48	WOODEN COLOURS	60
NON-STANDARD DESIGNS	50	GLASS PANE	62
FITTINGS	52	GLASS-PANE SPACERS	64
FIXING AND MASKING ANGLE PROFILES	54	SMART HOME	66

INFORMATION

ADDITIONAL OPTION	68
COMPARISON SYSTEMS:	
- WINDOWS	70
- TERRACES	72
OTHER PRODUCTS	74
ABOUT US	78



WINDOW SYSTEMS
MB-70 / MB-70HI

These modern aluminium systems mean durability and satisfaction with use for many years.

In the MB-70HI system, special insulation inserts are used to increase thermal insulation.



Smart Home



Additional options p. 68

TECHNICAL DATA



70 mm

installation depth



MB-70 $U_w = 1,06 \text{ W}/(\text{m}^2\text{K})^*$
MB-70HI $U_w = 0,96 \text{ W}/(\text{m}^2\text{K})^*$

thermal transmittance



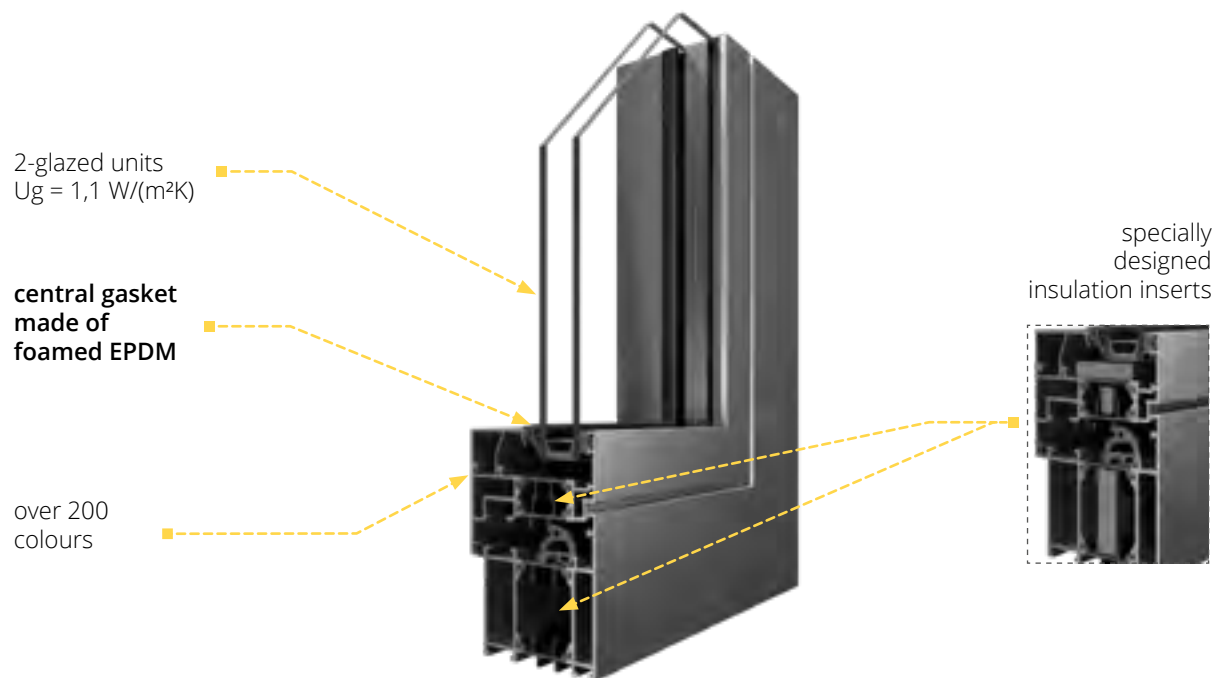
3

gaskets

*More data at page 70.

SYSTEM STRUCTURE

3-chamber system with an installation depth of 70 mm. The system is equipped with a triple gasket: external and internal with EPDM and central with foamed EPDM



Standard:

- MACO MULTI-MATIC KS fittings with 2 anti-theft strikers with Silber-Look anticorrosion coating for long-lasting protection and smooth operation of the fitting
- sash lifter (lifting mishandling device - depending on window height)
- microventilation in tilt and turn windows
- hinge covers in 3 colours: white, silver, brown
- aluminium handle
- 2-glazed (1-chamber) units infilled with argon gas with $U_g = 1.1 \text{ W}/(\text{m}^2\text{K})$
- glass-pane spacer made of galvanised steel
- 2 EPDM gaskets (external and internal) + 1 central gasket made of foamed EPDM, gaskets available in black
- RAL matt color: white (7016), anthracite (9016)



EXTRAS

A wide range of accessories enables you to fully personalise your windows and terrace systems. With us, you will create a window joinery that meets your expectations.

MUNTIN BARS

Create an elegant and yet unique look for your windows. The wide configuration options combined with the available colours make it possible to create many interesting arrangements.

Muntin bars can be used on all our window and terrace systems.



*For the option of making a particular design from muntin bars, ask your dealer or contact Drutex's Technology Department.



INSIDE GLASS MUNTINS

Internal aluminium muntin bars

Internal muntin bars in widths of 8 mm, 18 mm, 26 mm or 45 mm. Available colours: white, gold, silver, golden oak, dark oak, mahogany, nut, macore, winchester, RAL 8022 (ask your dealer for the other colours).

Available for:

- aluminium
- wooden
- wooden-aluminium

GLUED-ON MUNTINS

Wooden glued on muntin bars

Glued on muntin bar in widths of 26 mm or 36 mm. Available in our colour palette (p. 60).

Available for:

- wooden



D



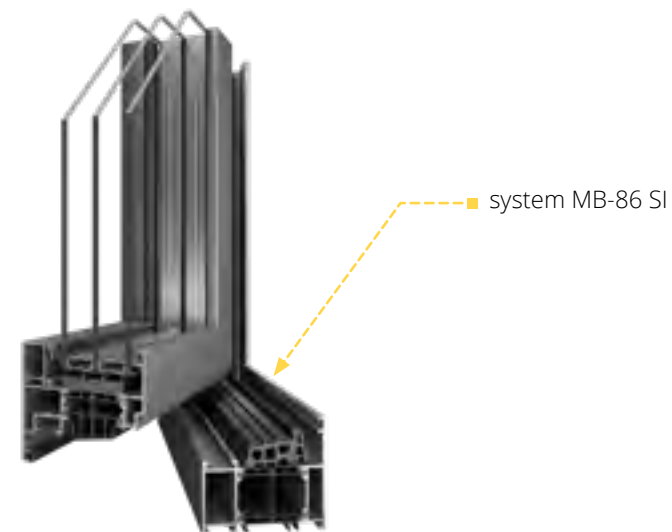
BALCONY THRESHOLDS

The balcony thresholds we offer are characterised by the highest ergonomics in use, durable construction and a high degree of thermal insulation. They are ideal for any climate zone.

ALUMINIUM THRESHOLD 32 MM FOR MB-86 SI



STANDARD FRAME FOR ALL ALUMINIUM SYSTEMS



ALUMINIUM THRESHOLD FOR SYSTEMS:
SOFTLINE, DUOLINE



STANDARD FRAME FOR ALL WOODEN
SYSTEMS



D

HANDLES

The handles used in our products are made of aluminium and are distinguished not only by their elegant design the colour options, but also by their ergonomic shape. Handles can be supplied with options with a key or push-button to prevent unintentional opening (an option particularly recommended for children's rooms).

ALUMINIUM HANDLES FOR WINDOW AND BALCONY DOORS

STANDARD WINDOW HANDLE



WINDOW HANDLE WITH PUSH-BUTTON



WINDOW HANDLE WITH KEY



DUBLIN WINDOW HANDLE



DUBLIN WINDOW HANDLE WITH PUSH-BUTTON



DUBLIN WINDOW HANDLE WITH KEY



WINDOW HANDLE MA1010 STAINLESS STEEL



HANDLES FOR IGLO - HS SYSTEM

STANDARD



WITH SINGLE-SIDED INSERT



HANDLE WITH AUTOMATIC FOR PSK SYSTEM



WITH DOUBLE-SIDED INSERT



Available in: white, silver, olive and brown.





D

NON-STANDARD DESIGNS

We also offer non-standard window designs in systems:

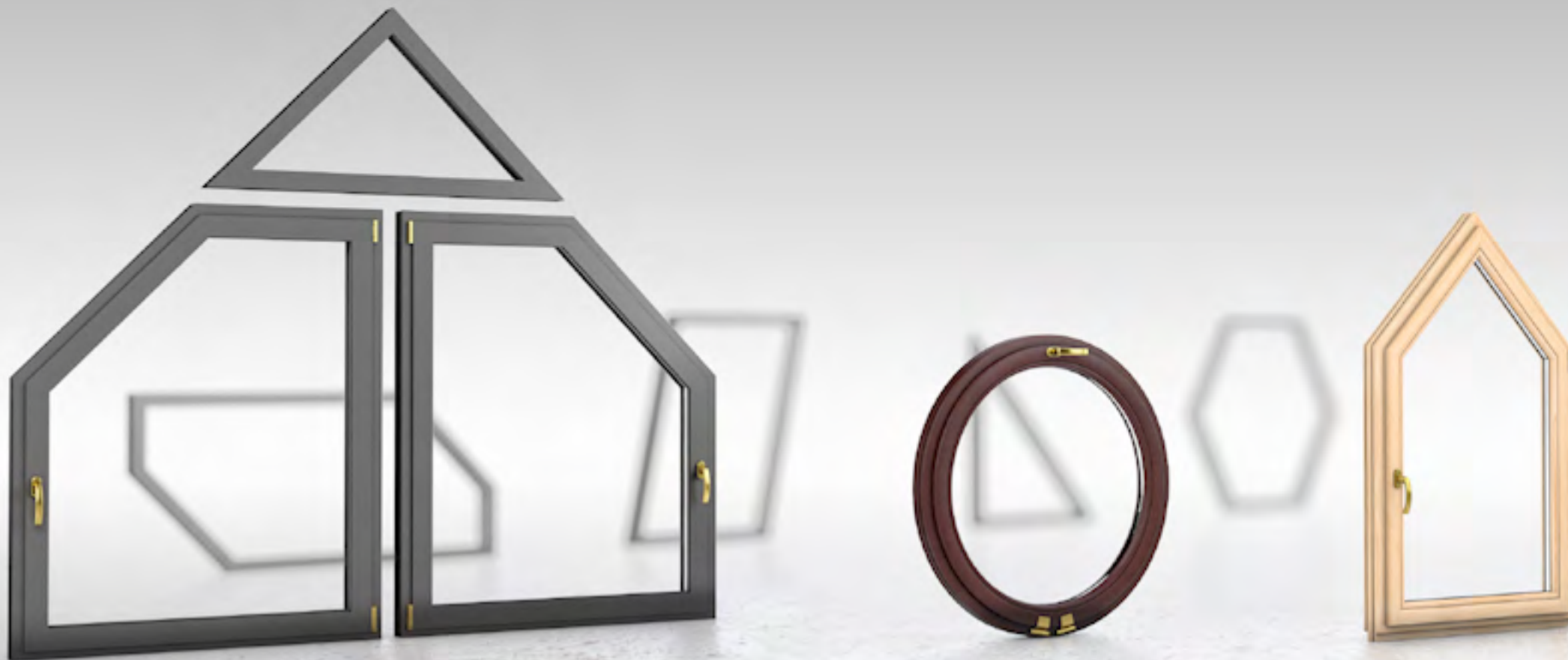
- MB-86SI
- MB-70 / MB-70HI
- MB-45
- SOFTLINE
- DUOLINE

For confirmation of a non-standard design, contact your dealer or Drutex's Technology Department.



CREATE YOUR OWN UNIQUE STYLE

D



FITTINGS

The fittings used by DRUTEX are the perfect solution in terms of security and functionality of the window and door joinery.

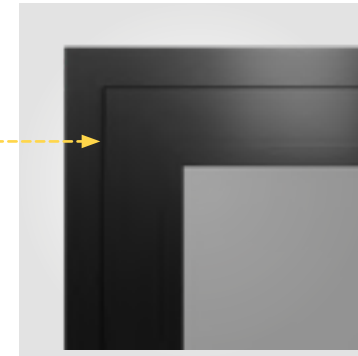
The fittings used by DRUTEX are the perfect solution in terms of security and functionality of the window and door joinery.

MOUNTING WEDGES

Option of ordering mounting wedges used to level window and door frames during the installation.



STANDARD HINGES



CONCEALED HINGES
invisible when window is closed



TRANSOM WINDOW LOCK

allows the transom window to be opened or closed mechanically in places that are difficult to access (e.g. due to the height of the transom window).



REED SWITCH

magnetic window and door opening sensor is a part of the Smart Home access control system or alarm system



FRICTION BRAKE

protects against spontaneous opening or closing of window and door sashes

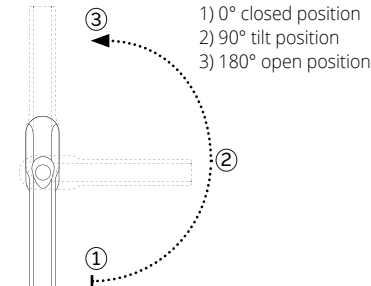


HINGE COVERS¹

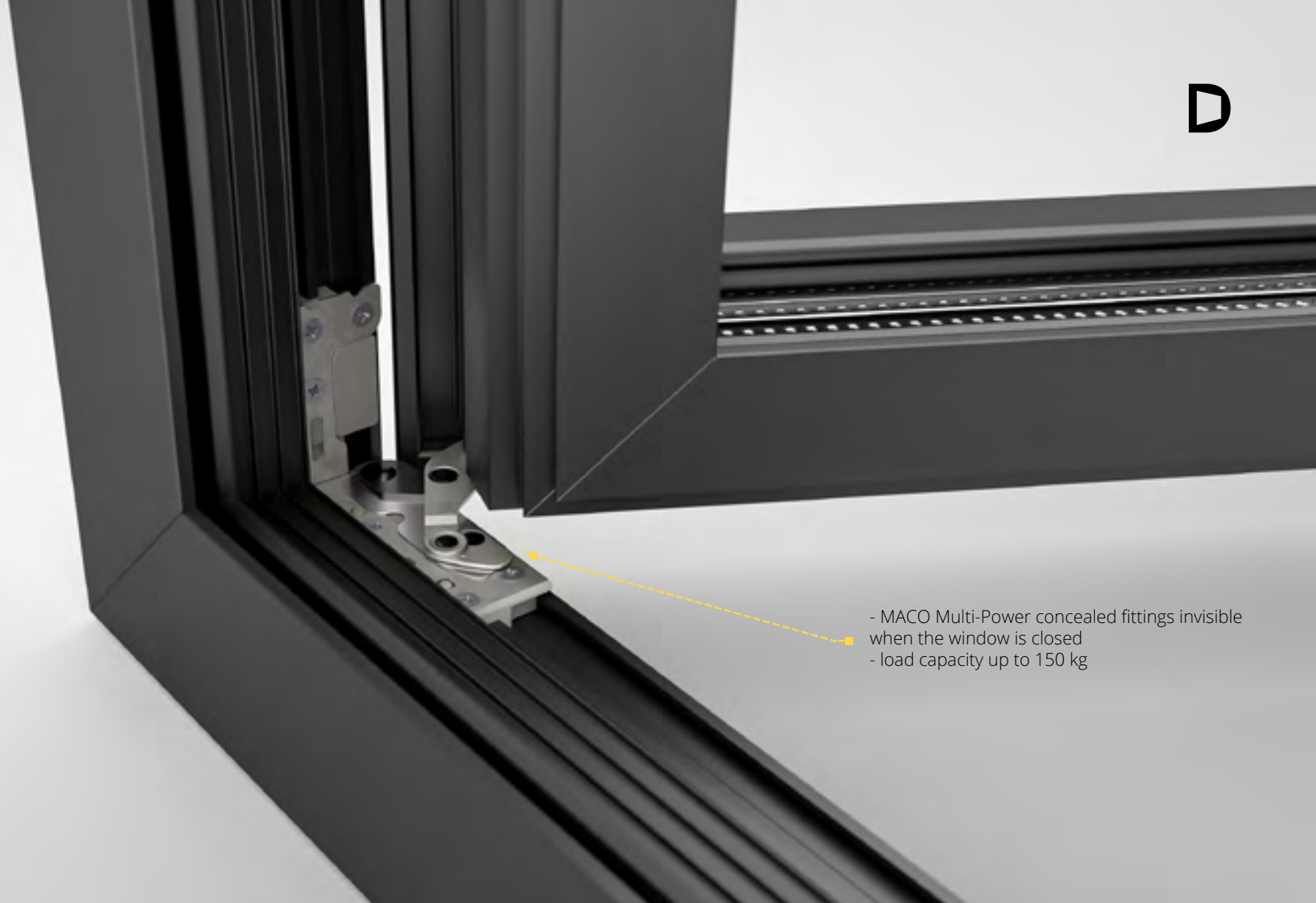


TBT (TILT BEFORE TURN) FITTINGS

tilt position before opening - key protection against full opening of the window



ALUMINIUM BALCONY DOOR PULL-HANDLE²



- MACO Multi-Power concealed fittings invisible when the window is closed
- load capacity up to 150 kg

1) Colours available:

Standard:

- white
- brown
- light brown
- silver

as an additional option:

- black
- gold-look
- titanium
- champagne
- cream

2) Colours available:

- white, RAL 9016,
- silver, RAL 9006,
- brown RAL 8019,
- RAL 1036,
- RAL 7016



FIXING AND MASKING ANGLE PROFILES

The use of fixing and masking angle allows windows to be installed without removing the old window frames. This solution is successfully used in historic buildings or where exceptional care is required for the building facade.

Available colours p. 58-59.






D

VENTILATION

Aiming at providing the highest living comfort, Drutex offers high-quality ventilators that ensure proper ventilation and fresh air when the windows are tightly closed.

 For the application of ventilation in PSK systems, consult the DRUTEX's Technology Department.

INTERNAL VIEW

6-30 m³/h*



Aereco AMO pressure ventilator

1) Available colours:

- white,
- RAL: 9005, 8001, 8017, 7016.

6,2-22 m³/h*



Ventair Simpess pressure ventilator

1) Available colours:

- white,
- RAL: 8003, 8017.

7-28 m³/h*



Aereco EXR acoustic hygro-regulated ventilator

1) Available colours:

- white,
- RAL: 8001, 8017, 7016, 7045.

5-29 m³/h*



Aereco EMM hygro-regulated ventilator

1) Available colours:

- white,
- RAL: 8001, 8017, 7016, 7045.

*Measured at 10 Pa - data obtained from the ventilator manufacturer.

BENEFITS OF USING VENTILATORS:

- modern, natural and healthy ventilation
- improved air exchange
- thermal comfort in the room (no feeling of draught as with tilted windows)
- possibility of adjusting the air flow in accordance with the weather conditions
- reducing the risk of damp rooms and the fungal and mould growth
- security
- wide range of options: wooden windows, PVC windows, aluminium windows.



5,2 m³/h*

Radaks

Available colours: white (gaskets in black or grey).



6,5 m³/h*

Maco Vent

Available colours: white (gaskets in black or grey).



5,6 m³/h*

Regel - air

Available colours: white (gaskets in black or grey).



46,5 m³/h*

RENSON THM 90 ventilator with a drip cap

Available colours:
 - RAL: 7016, 8019, 9005, 9006, 9016,
 - Ask your dealer or our sales department about custom colours.



RENSON THM 90

*Measured at 10 Pa - data obtained from the ventilator manufacturer.

ALUMINIUM WINDOW COLOURS

RAL 7016 MATT AND 9016 MATT AS STANDARD

In the interest of producing the highest quality doors, based on one of the world's most modern powder coating plants, Drutex offers a wide range of paint coatings colours. Among them, depending on the expected aesthetics, metallic paints with structure, matt paints, or even paints ensuring special effects.

The colour scheme also applies to the aluminium parts of the DUOLINE product line.

COLOUR PALETTE

RAL and Aluprof Color
Collection*.



ILLUSTRATIVE SMOOTH MATT PAINTS

Create an aesthetic matt finish.



RAL 3004
M304



RAL 6005
M605



RAL 7001
M701



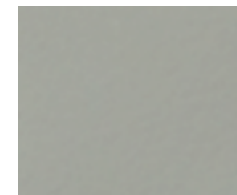
RAL 7016
M716



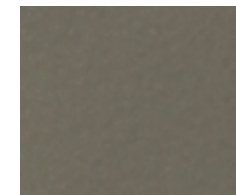
RAL 8019
M819



RAL 9005
M905



RAL 9006
M906



RAL 9007
M907



RAL 9016
M916

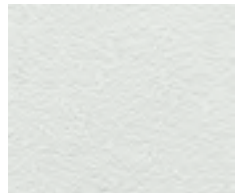
Pearl colours:

1035 | 1036 | 2013 | 3032 | 3033 | 4011 | 4012 | 5025 | 5026 | 6035 | 6036 | 7048 | 8029 | 9022 | 9023
possible to make with an extra charge.

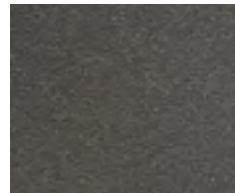
*Print may vary from the actual colour.

ILLUSTRATIVE METALLIC PAINTS WITH STRUCTURE

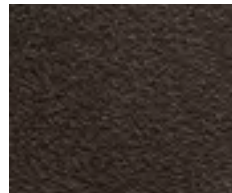
Get a modern industrial vibe.



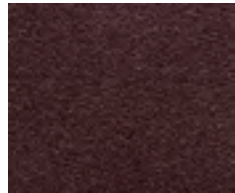
Metallic White
MWT1



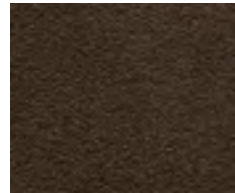
Metallic Beige
MBE1



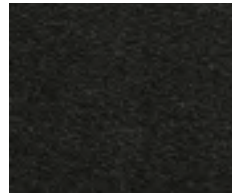
Metallic Brown
MBR1



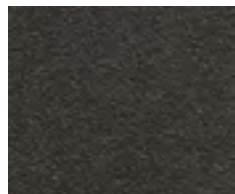
Metallic Red
MRE1



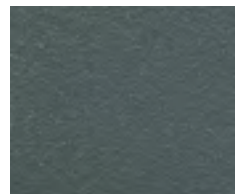
Rusty Brown
RBR1



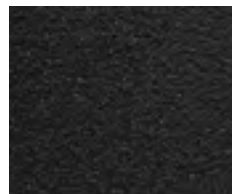
Metallic Grey DB703
MGR1



Modern Grey
MOG1



Metallic Ash
MAH1



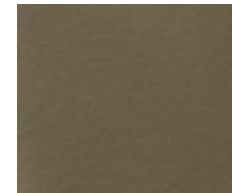
Metallic Black
MBC1

ILLUSTRATIVE SPECIAL EFFECT PAINTS

Noble finish in accordance with the nature.



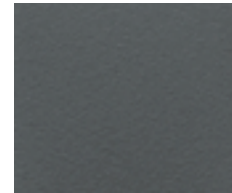
Anodic Silver
AST1



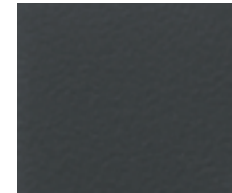
Anodic Olive
AOL1



Golden Oak
ZDA1



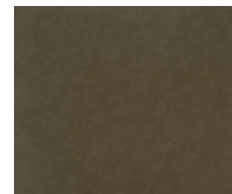
Anodic Grey
AGR1



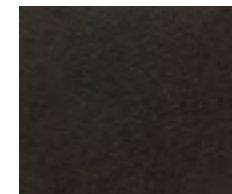
Anodic Platinum
APT1



Nut
ORZ1



Anodic Bronze
ABN1



Anodic Brown
ABR1



Winchester
WIN1

UNAVAILABLE RAL COLOURS (up-to-date list at your dealer):

1035 | 1036 | 2013 | 3032 | 3033 | 4011 | 4012 | 5025 | 5026 | 6035 | 6036
7048 | 8029 | 9022 | 9023 | 1026 | 2005 | 2007 | 3024 | 3026 | 6038.

WOODEN WINDOW COLOURS

The rich range of opaque paints, provides 100% protection for the wooden structure. Transparent paints (azure) emphasise the structural characteristics of the given wood type and display the appropriate tint at the same time. The wooden exterior doors are a perfect solution for clients who value not only classic designs but also modern trends.

The colour scheme also applies to the wooden parts of the DUOLINE product line.

Non standard colours according to RAL.



STANDARD COLOURS

PINE

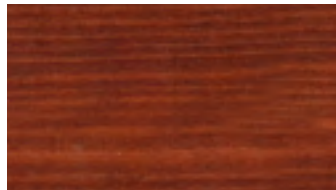
ILLUSTRATIVE COLOURS



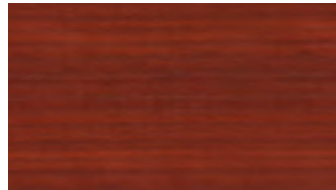
White (opaque)



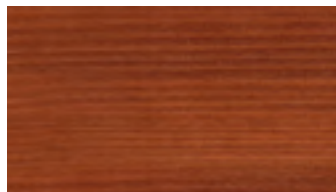
Light Oak



Teak



Mahogany

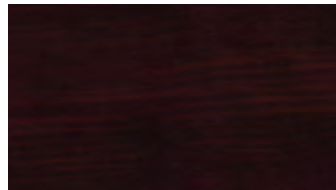


Dark Oak



Nut

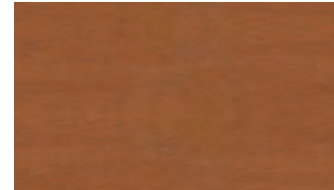
Depending on the type of wood used, the colour may differ from the pattern.



Palisander

MERANTI

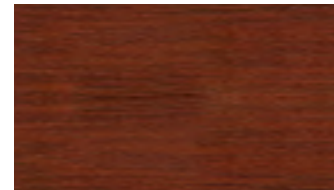
ILLUSTRATIVE COLOURS



Light Oak



White (opaque)



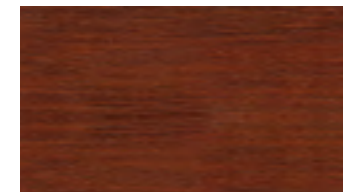
Meranti Mahogany



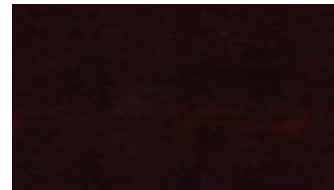
Teak



Nut



Dark Oak



Palisander

IMPORTANT - as an option for the DOULINE system, we offer a clearcoat for the wooden part of the window (from inside).

*Print may vary from the actual colour.

GLASS PANES

We offer many types of glass panes that are characterised by the highest quality of workmanship. Choose panes for your windows that will meet your expectations and give your interior unique character.

We have been manufacturing multiple glazed panes since 1994. We have a state-of-the-art glass tempering plant and our own research laboratories, which ensure the highest quality.

The glazed units we manufacture can be fitted with special capillaries to equalise the pressure inside the glass with atmospheric pressure. Thanks to this solution, the glazing packages will perform perfectly in your premises.



Option to sandblast the glass in any way you wish (in 3 shades of grey)* or to use ready-made designs.

INFILLING MATERIAL

- **ARGON** - all glazed units are infilled with argon gas as standard, which guarantees very good thermal insulation. This has resulted in glazed units with Ug value of between 1.1 and 0.5 W/(m²K).



3-pane (2-chamber) 48 mm units with glass-pane spacer made of galvanised steel.



GLASS TYPES



Matt



Striped sandblasted glass*



Reflect-float brown 6 mm



Reflect-float blue 6 mm



Float 4, 6, 8, 10 m

Thermal coating option.



Laminated glass

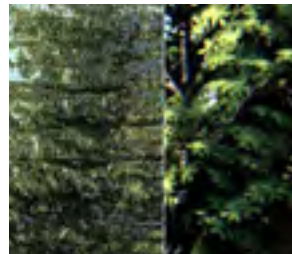
Thermal coating option.



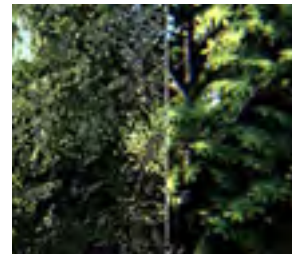
Chinchilla ornament



Delta ornament



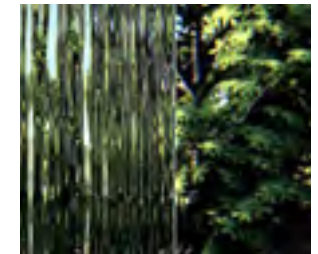
Silvit ornament



Cathedral ornament



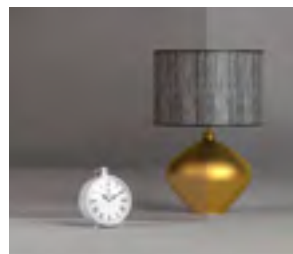
Master Carre ornament



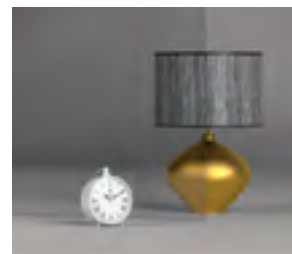
Rain ornament



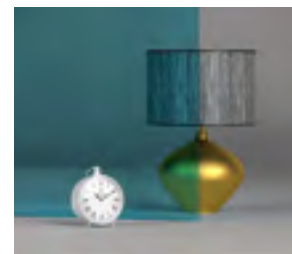
Antisol green



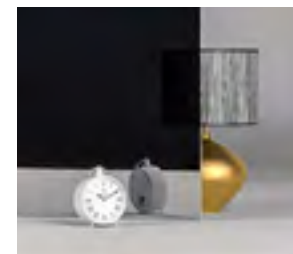
Antisol brown



Antisol grey



Antisol blue

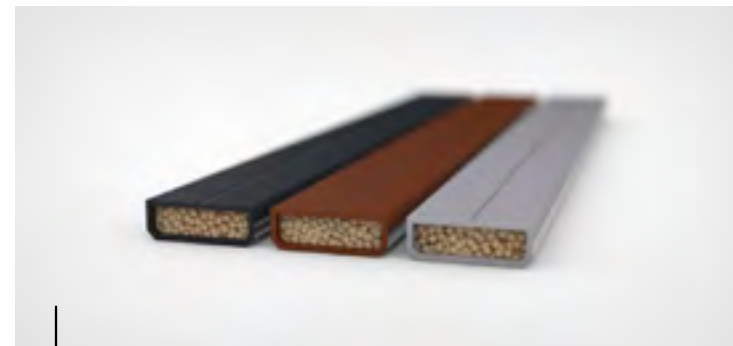
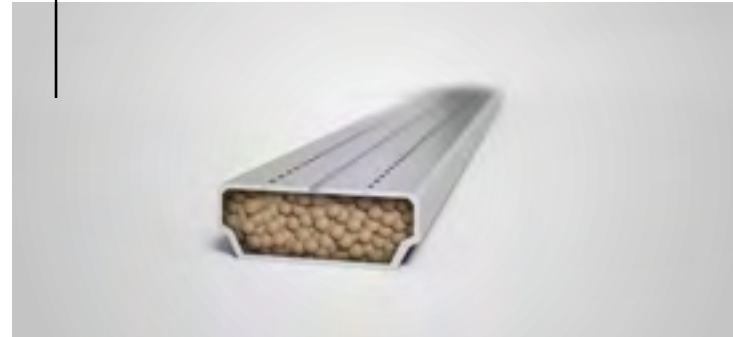


Mirastar

GLASS-PANE SPACERS

The glass-pane spacers contribute to the thermal insulation of the glazed units. Drutex already offers glass-pane spacer made of galvanised steels as a standard, which are characterised by very good thermal insulation, much better than aluminium spacers. The Swisspacer Ultimate plastic spacer is available as an option.

Glass-pane spacer made of galvanised steel is provided as standard with every glazed unit.



Swisspacer Ultimate

Optional Swisspacer Ultimate glass-pane spacer available in black, brown, grey.



SMART HOME WITH EVERYTHING UNDER CONTROL

Intelligent control systems for window automation via remote control, tablet or smartphone are becoming increasingly popular with customers, allowing the system to also be managed remotely while they are away.

There is the option of opening and closing windows individually, in groups as well as time-based programming and connection to other intelligent systems in the house.

This is an investment in comfort and functionality at the highest level.

G - U AUTOMATICS

A modern system designed for HS system solutions.

Functions:

- opening and closing
- operation via remote control and/or smartphone app



TaHoma® switch

Windows, doors, roller shutters, Venetian blinds, gates and wickets that, thanks to the intelligent control unit from Somfy - TaHoma® switch, can open or close by themselves at selected times of the day, can tilt or slide in integrated groups or individually, offering us full control and surveillance of our home, even when we are not inside. The TaHoma® switch also allows us to manage the lighting in the house and garden.



BleBox product line

These are miniature devices that allow you to open and close doors, windows, roller shutters, awnings, Venetian blinds, gates, manage lighting or the alarm system via your smartphone and tablet - even from anywhere in the world.





ADDITIONAL OPTIONS FOR WINDOW SYSTEMS

	MB-86SI	MB-70 MB-70HI	MB-45	SOFTLINE	DUOLINE
max Ug = * W/(m²K) for glass packet	*0,5	*0,5	*1,1	*SL 68 = 0,8 *SL 78 = 0,6 *SL 88 = 0,5	*DL 68 = 0,6 *DL 78 = 0,5 *DL 88 = 0,5
option of using glass panes with improved sound insulation, laminated (safety and anti-burglary), ornamental, solar control, mirror and sandblasted	*	*	*	*	*
option of using the Swisspacer Ultimate glass-pane spacer available in 3 colour variants: black, grey, brown	*	*	*	*	*
option of using MACO Multi-Power concealed hinges in the fittings groove (invisible when the window is closed) as well as COMFORT and TBT fittings	*	*	*	*	*
option of selecting gaskets in grey, *z) glazing gasket seal in colour white, golden oak, brown sepia	*	*	*	*z	*z
handles for windows with movable post	*	*	*	*	*
*a) hinge covers in custom colours: titanium, champagne, cream, black and gold, *b) for aluminium windows only black hinge covers	*b	*b	*b	*a	*a
turn lock	*	*	*	*	*
option of using ventilators	*	*	*	*	*
option of using 8 mm, 18 mm, 26 mm or 45 mm wide aluminium internal muntin bars	*	*	*	*	*
option of using 26 mm or 36 mm vienna grills glued on muntins bar	-	-	-	*	-
available with roller shutters, Venetian blinds and mosquito nets	*	*	*	*	*
option of using fixing and masking angle	*	-	-	-	-
option of providing Smart Home automation	*	*	*	*	*
wide range of additional profiles (connectors, extensions, sill profiles)	*	*	*	*	*
dedicated system thresholds	*	*	-	*	*

ADDITIONAL OPTIONS FOR TERRACE SYSTEMS	MB-86 FOLD LINE	MB-77 HS MB-77 HS HI	MB-70 PSK MB-70HI PSK	SOFTLINE 68	SOFTLINE HS	SOFTLINE PSK	DUOLINE HS	DUOLINE PSK
max Ug = * W/(m²K) for glass packet	*0,5	*0,5	*0,5	*0,8	*SL 68 = 0,8 *SL 78 = 0,6 *SL 88 = 0,5	*SL 68 = 0,8 *SL 78 = 0,6 *SL 88 = 0,5	*DL 68 = 0,6 *DL 78 = 0,5 *DL 88 = 0,5	*DL 68 = 0,6 *DL 78 = 0,5 *DL 88 = 0,5
option of using glass panes with improved sound insulation, laminated (safety and anti-burglary), ornamental, solar control, mirror and sandblasted	*	*	*	*	*	*	*	*
option of using the Swisspacer Ultimate glass-pane spacer available in 3 colour variants: black, grey, brown	*	*	*	*	*	*	*	*
system carts with a load capacity of 400 kg	-	*	-	-	*	-	*	-
option of selecting gaskets in grey, *z) glazing gasket seal in colour white, golden oak, brown sepia	*	*	*	*z	*z	*z	*z	*z
option of using the MACO SKB-Z automatic fitting which supports closing of the tilt	-	-	*	-	-	*	-	*
option of using ventilators	*	*	*	*	*	*	*	*
option of using 8 mm, 18 mm, 26 mm or 45 mm wide aluminium internal muntin bars	*	*	*	*	*	*	*	*
option of using 26 mm or 36 mm vienna grills glued on muntins bar	-	-	-	*	*	*	-	-
available with roller shutters, venetian blinds and mosquito nets	*	*	*	*	*	*	*	*
option of providing Smart Home automation	-	*	-	-	*	*	-	*
dedicated system thresholds	-	*	-	-	*	-	*	-

COMPARISON OF WINDOW SYSTEMS



INFORMATION

MB-86SI

MB-70 / MB-70HI

MB-45

PROFILE MATERIAL	aluminium	aluminium	aluminium
THERMAL INSULATION U_w	0,82 W/(m ² K)*1	MB-70 $U_w = 1,06$ W/(m ² K)*1 MB-70HI $U_w = 0,96$ W/(m ² K)*1	-
GASKETS	3	3	2
GLAZED UNITS AS STANDARD	$U_g = 1.1$ W/(m ² K) 2-pane (1 chamber) units, infilled with argon gas, glass-pane spacer made of galvanised steel	$U_g = 1.1$ W/(m ² K) 2-pane (1 chamber) units, infilled with argon gas, glass-pane spacer made of galvanised steel	$U_g = 1.1$ W/(m ² K) 2-pane (1 chamber) units, infilled with argon gas, glass-pane spacer made of galvanised steel
GLAZING THICKNESS MIN. - MAX.	17,5-70 mm	23,5-62 mm	1,5-37 mm
PROFILE DEPTH	77 mm	70 mm	45 mm
BALCONY THRESHOLD AS STANDARD	profile frame	profile frame	profile frame

*1 for window 1230x1480 mm – calculation method = 0,82 W/(m²K) with glass $U_g = 0,5$ W/(m²K) infilled with argon gas, with Swisspacer plastic spacer.

*2 for window 1230x1480 mm - calculation method, meranti wooden with glass $U_g = 0,8$ W/(m²K) infilled with argon gas, with Swisspacer plastic spacer.



SOFTLINE



DUOLINE

wooden

wooden + aluminium

68 Uw = 1,08 W/(m²K)^{*2}
 78 Uw = 0,9 W/(m²K)^{*2}
 88 Uw = 0,8 W/(m²K)^{*2}

68 Uw = 0,90 W/(m²K)^{*3}
 78 Uw = 0,84 W/(m²K)^{*4}
 88 Uw = 0,79 W/(m²K)^{*4}

2

3

Ug = 1.1 W/(m²K) 2-pane (1 chamber)
 units, infilled with argon gas,
 glass-pane spacer made of galvanised steel

Ug = 1.1 W/(m²K) 2-pane (1 chamber)
 units, infilled with argon gas,
 glass-pane spacer made of galvanised steel

Softline 68 up to 32 mm
 Softline 78 up to 44 mm
 Softline 88 up to 54 mm

Duoline 68: up to 46 mm
 Duoline 78: up to 50 mm
 Duoline 88: up to 50 mm

68, 78 or 88 mm

Duoline 68 - 82 mm
 Duoline 78 - 92 mm
 Duoline 88 - 102 mm

profile frame

profile frame

^{*3} for window 1230x1480 mm - calculation method, meranti wooden with glass Ug= 0,6 W/(m²K) infilled with argon gas, with Swisspacer plastic spacer.
^{*4} for window 1230x1480 mm - calculation method, meranti wooden with glass Ug= 0,5 W/(m²K) infilled with argon gas, with Swisspacer plastic spacer.



COMPARISON OF TERRACE SYSTEMS



INFORMATION

MB-86 FOLD LINE

MB-77HS / MB-77HS HI

MB-70 PSK / MB-70HI PSK

SOFTLINE 68

PROFILE MATERIAL	aluminium	aluminium	aluminium	wooden
THERMAL INSULATION U_w	$U_w = 1,1 \text{ W}/(\text{m}^2\text{K})^{*1}$	MB-77 HS $U_w = 1,1 \text{ W}/(\text{m}^2\text{K})^{*2}$ MB-77HI HS $U_w = 1,0 \text{ W}/(\text{m}^2\text{K})^{*2}$	$U_w = 0,8 \text{ W}/(\text{m}^2\text{K})^{*3}$	pine $U_w = 1,09 \text{ W}/(\text{m}^2\text{K})^{*4}$ meranti $U_w = 1,04 \text{ W}/(\text{m}^2\text{K})^{*4}$
GASKETS	3	3	3	2
GLAZED UNITS AS STANDARD	1.1 $\text{W}/(\text{m}^2\text{K})$ 2-pane (1 chamber) units, infilled with argon gas, glass-pane spacer made of galvanised steel	1.1 $\text{W}/(\text{m}^2\text{K})$ 2-pane (1 chamber) units, infilled with argon gas, glass-pane spacer made of galvanised steel	1.1 $\text{W}/(\text{m}^2\text{K})$ 2-pane (1 chamber) units, infilled with argon gas, glass-pane spacer made of galvanised steel	1.1 $\text{W}/(\text{m}^2\text{K})$ 2-pane (1 chamber) units, infilled with argon gas, glass-pane spacer made of galvanised steel
GLAZING THICKNESS MIN. - MAX.	13-61 mm	9-61 mm	24-53 mm	24-32 mm
PROFILE DEPTH	86 mm	174 mm	70 mm	68 mm
BALCONY THRESHOLD AS STANDARD	system threshold	system threshold	profile frame	system threshold

*1 for terrace system (3 sash), size 3000x2500 mm with glass T4 + 18 SwissSpacer Ultimate + FL4 + 18 SwissSpacer Ultimate + T4 - calculation method

*2 for terrace system 4000 x 2200 mm with glass T4 + 18 SwissSpacer Ultimate + FL4 + 18 SwissSpacer Ultimate + T4 - calculation method

*3 for terrace system 2700 x 2300 mm with glass T4 + 18 SwissSpacer Ultimate + FL4 + 18 SwissSpacer Ultimate + T4 - calculation method

*4 for terrace system 2900x2450 mm with glass $U_g=0,8 \text{ W}/(\text{m}^2\text{K})$ + plastic spacer SwissSpacer Ultimate - calculation method

*5 for terrace system 3600x2450 mm with glass $U_g=0,8 \text{ W}/(\text{m}^2\text{K})$ + plastic spacer SwissSpacer Ultimate - calculation method

*6 for terrace system 3600x2450 mm with glass $U_g=0,6 \text{ W}/(\text{m}^2\text{K})$ + plastic spacer SwissSpacer Ultimate - calculation method



SOFTLINE HS



SOFTLINE PSK



DUOLINE HS



DUOLINE PSK



wooden	wooden	wooden + aluminium	wooden + aluminium
68 Uw = 1,08 W/(m ² K) ^{*5} 78 Uw = 0,9 W/(m ² K) ^{*6} 88 Uw = 0,8 W/(m ² K) ^{*7}	pine 68 Uw = 1,06 W/(m ² K) ^{*8} pine 78 Uw = 0,87 W/(m ² K) ^{*9} pine 88 Uw = 0,77 W/(m ² K) ^{*10} meranti 68 Uw = 1,01 W/(m ² K) ^{*8} meranti 78 Uw = 0,83 W/(m ² K) ^{*9} meranti 88 Uw = 0,73 W/(m ² K) ^{*10}	pine 68 Uw = 1,0 W/(m ² K) ^{*5} pine 78 Uw = 0,85 W/(m ² K) ^{*6} pine 88 Uw = 0,79 W/(m ² K) ^{*7} meranti 68 Uw = 0,96 W/(m ² K) ^{*5} meranti 78 Uw = 0,80 W/(m ² K) ^{*6} meranti 88 Uw = 0,75 W/(m ² K) ^{*7}	pine 68 Uw = 0,93 W/(m ² K) ^{*11} pine 78 Uw = 0,75 W/(m ² K) ^{*12} meranti 68 Uw = 0,90 W/(m ² K) ^{*11} meranti 78 Uw = 0,71 W/(m ² K) ^{*12}
2	2	3	3
1.1 W/(m ² K) 2-pane (1 chamber) units, infilled with argon gas, glass-pane spacer made of galvanised steel	Softline 68 i 78: Ug = Ug = 1.1 W/(m ² K) 2-pane (1 chamber) units, infilled with argon gas, glass-pane spacer made of galvanised steel Softline 88: Ug = 0,5 W/(m ² K) 3-pane (2 chamber) units, infilled with argon gas, glass-pane spacer made of galvanised steel	Ug = 1.1 W/(m ² K) 2-pane (1 chamber) units, infilled with argon gas, glass-pane spacer made of galvanised steel	Ug = 1.1 W/(m ² K) 2-pane (1 chamber) units, infilled with argon gas, glass-pane spacer made of galvanised steel
SL 68: 24-32 mm SL 78: 24-44 mm SL 88: 24-54 mm	SL 68: 24-32 mm SL 78: 24-44 mm SL 88: 24-54 mm	DL 68: 24-44 mm DL 78: 24-50 mm DL 88: 24-58 mm	DL 68: 24-44 mm DL 78: 24-50 mm
SL 68: 164 mm SL 78: 184 mm SL 88: 204 mm	68, 78 or 88 mm	DL 68: 194 mm DL 78: 214 mm DL 88: 234 mm	DL 68: 82 mm DL 78: 92 mm
system threshold	profile frame	profile frame	profile frame

^{*7} for terrace system 3600x2450 mm with glass Ug=0,5 W/(m²K) + plastic spacer SwissSpacer Ultimate - calculation method
^{*8} for terrace system 2600x2260 mm with glass Ug=0,8 W/(m²K) + plastic spacer SwissSpacer Ultimate - calculation method
^{*9} for terrace system 2600x2260 mm with glass Ug=0,6 W/(m²K) + plastic spacer SwissSpacer Ultimate - calculation method
^{*10} for terrace system 2600x2260 mm with glass Ug=0,5 W/(m²K) + plastic spacer SwissSpacer Ultimate - calculation method
^{*11} for terrace system 2600x2260 mm with glass Ug=0,7 W/(m²K) + plastic spacer SwissSpacer Ultimate - calculation method
^{*12} for terrace system 2600x2260 mm with glass Ug=0,6 W/(m²K) + plastic spacer SwissSpacer Ultimate - calculation method



PVC WINDOWS



PVC TERRACE SYSTEMS



ROLLER SHUTTERS EXTERNAL VENETIAN BLINDS MOSQUITO NETS



D



DOORS

PVC
aluminium
wood

Drutex exterior doors mean very good thermal insulation parameters. various arrangement and functional possibilities as well as modern design and security. Highest quality components and equipment, used in the process of production, helped in creating product worthy of XXI century.

Drutex is currently one of the leading producers of windows and doors in Europe. Not only, is it one of the most innovative and reliable polish brands, but also a calling card of polish entrepreneurship success' in the whole world.

The company, based in 100% on polish capital, from the beginning is managed by its founder, Leszek Gierszewski.

Thanks to the guaranteed high quality, rich offer, technological advancement, own laboratories, high efficiency of operation, really short lead and delivery time, year by year we grow our addressee net. Each product is custom-made and produced for a specific customer.

We offer PVC, aluminium, and wooden windows and doors, roller shutters, venetian blinds, facades, and winter gardens.

Window-door joinery, branded with the DRUTEX logo, reaches six continents.

We have been appreciated by millions of satisfied customers and independent experts, granting the company with many prestigious awards. The most important ones include: Forbes Diamond, EU Standard, European Medal, Superbrands Title, Plus X Award 2017.



up to 7000
windows daily



3850
employees



450
vehicles



110 M sq. m.
surface
production

Fast delivery time



since 1985





D



Quality

The latest technology, the best materials and production control at each stage, as well, as our own research laboratories are the guarantee of quality.



Security

The windows and terrace systems are equipped with reliable fittings and locks, which ensures security.



Service

Professional and fast service is Drutex's calling card, which has been setting trends in pre- and post- sale customer services for many years now.



Smart Home

Intelligent control of doors, windows, roller shutters, venetian blinds, mosquito nets, gates, wickets, and lighting by means of a smartphone.



Leborska 31 Street, 77-100 Bytow
+48 59 822 91 01

————— **SINCE 1985** —————

The information presented in this advertising material are informative and illustrative only.
The product specification should be verified with the technical data specified by the manufacturer.